

INNOVASI SAMUDRA SDN BHD



From Shallow to Deep, We Have it All

SALES . SERVICE . RENTAL

About us

Established in 2003, ISSB is a Malaysian-owned entity actively engaged in the supply and commissioning of state-of-the-art equipment and contemporary solutions for the environmental and renewable natural resources markets. In conjunction with its associate consulting company, the firm also provides specialized technical services to government agencies, research institutions and private industries throughout the country.

Consulting and Technical Services

EIA related services:

- Marine habitat mapping including coral mapping using hydroacoustics
- Coral Survey & Monitoring (LIT, Reef Check, underwater video, permanent transect etc.)
- Marine Ecological Assessment: coral, fish, macro-invertebrates, phytoplankton, zooplankton, benthos
- Fisheries Resource Survey
- Sedimentation & Erosion Rate Study & Monitoring
- Chlorophyll-*a* analysis & training

Other services:

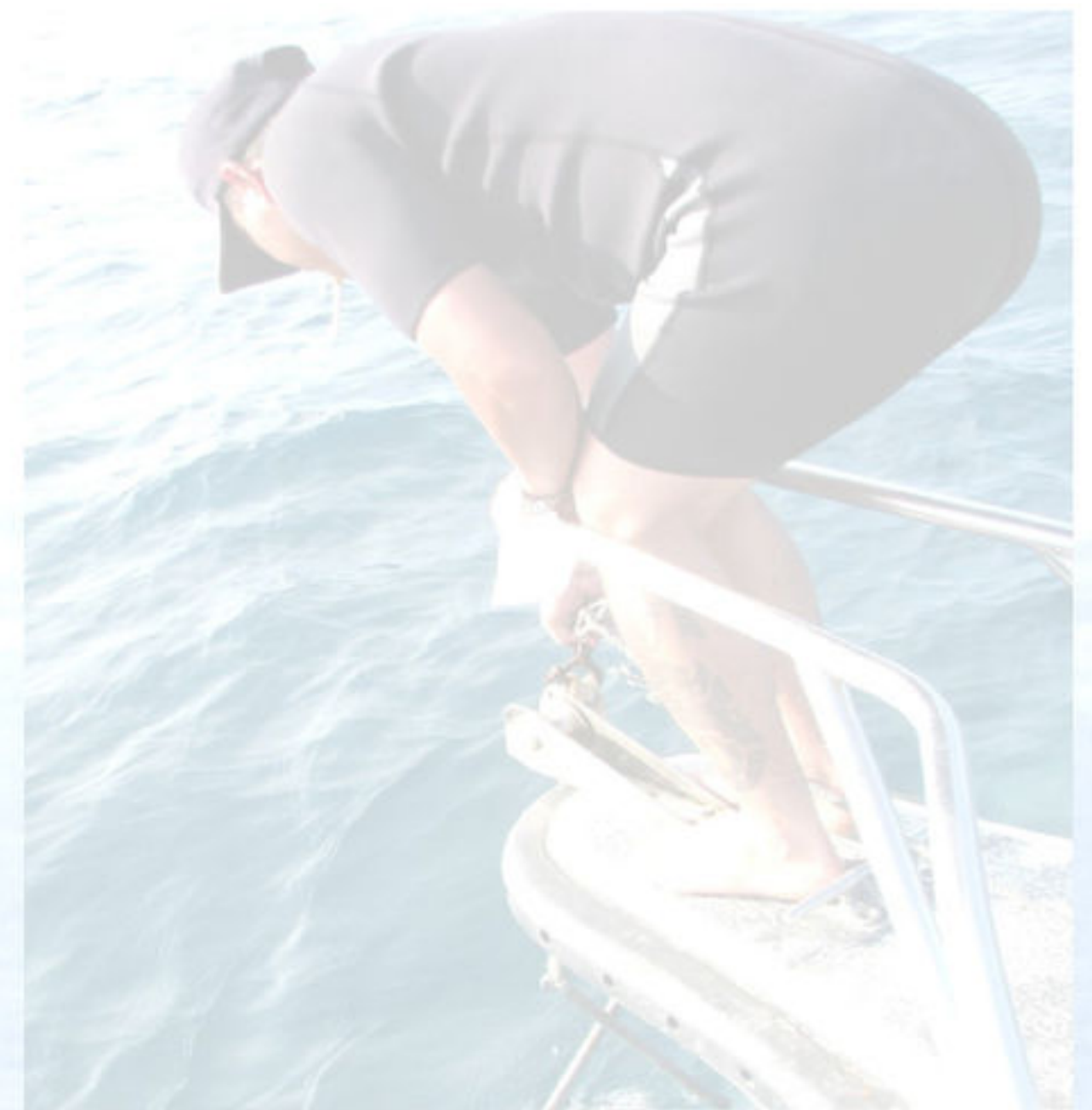
- Freshwater Ecological Assessment: fish, phytoplankton, zooplankton and benthos
- Ground truthing for satellite imageries for marine environments
- Bathymetry Survey: single beam and multibeam systems
- Laser scanning for rapid shoreline leveling and monitoring
- Current Profiling & Wave Spectrum Measurements
- ROV services: Pipeline inspection, hull and wharf inspection, site investigation etc.
- Stage Storage Capacity & Area Study for Dams
- Dye tracer: flow gauging, time of travel, dispersion, retention time etc.
- Histamine analysis & training
- Water Quality Monitoring
- PAHs monitoring
- Nutrient (Nitrate, Silicate, Phosphate or Ammonium) data collection

For services and equipments that are not listed above, please contact us.

Rental Pool

USBL, Pipe/Cable Trackers, Magnetometers, Motion Sensors, ROV, Depth Sensors, Tide Gauges, ADCP (wave, current, real-time discharge measurement), Current Meters, Side Scan Sonar, Sub-bottom Profiler, Acoustic Ground Discrimination System (AGDS), Hi-Res Multibeam Echo Sounder, CTD, SV Profiler, Acoustic Release, NDT, Video Camera, Drop Camera, Shallow water echo sounders, DGPS, RTK GPS, Multiparameter Water Quality Sonde, Sedimeter, Fluorometers (Chl-*a*, hydrocarbons, dye tracer etc.), (sedimentation rate monitoring), Smith-McIntyre Grab, Ekman Grab, Coastal Grab, Vibro Corer, Oceanographic Winches, Coastal Hydrographic Survey Vessel (32').

Please call for quotes.



Address :

58-1 Jalan SL 11/9,
Bandar Sungai Long,
43200 Kajang,
Selangor Darul Ehsan,
Malaysia.

Phone : +603-90192786

Fax : +603-90192785

Our Website:

www.innovasisamudra.com

Email :

sales.innovasisamudra@gmail.com

Oceanography

Nutrient Sensor . ROV . Sedimeter . Acoustic Current Profiler . Fluorometer
CTD . UCTD . USV . Barnacle . Sea Sonde HF Radar System . AGDS

SEA-BIRD ELECTRONICS



SBE 911 Plus CTD
Water Sampler,
Sensor etc.

<http://www.seabird.com/>

5 YRS
WARRANTY!

SBE



Temperature
Logger/
Recorder

ISUS & SUNA NUTRIENT SENSORS

SUNATLANTIC

SUNA

- Real time nitrate

ISUS

- Freshwater nutrient loading studies

<http://www.satlantic.com/>

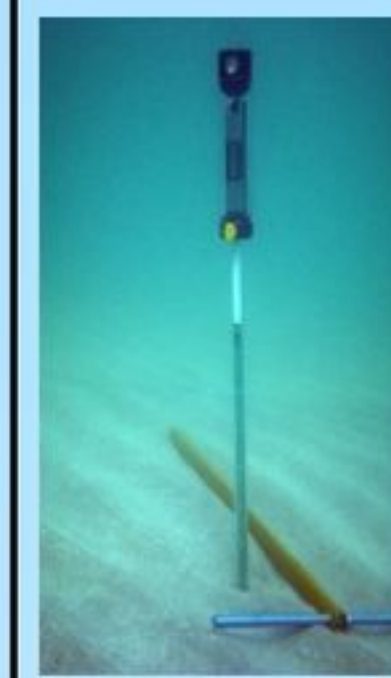
SEA SONDE

CODAR

SeaSonde
real-time data
over large
coverage areas,
with ranges up
to 200 km!
Current,
Wave, Sediment
Transport,
Tsunami,
Search & Recue

<http://www.codar.com/>

SEDIMETER



**LINDORM
Inc.**

Instrument for
measuring
sedimentation,
erosion, siltation,
scour and
resuspension.

<http://lindorm.com/>



Axelsson
Sediment Corer



Nilsson Depth-
Integrating
Suspended
Sediment
Sampler

WINCH & HANDHELD DIVER GPS

SOSIK

<http://www.soundocean.com/>

AGDS

**ACOUSTIC GROUND
DISCRIMINATION
SYSTEM**

Bathymetry survey,
Seabed Classification
System

ROV

**OUTLAND
1000"**
3000m rated!

<http://www.outlandtech.com/rov.htm>

ACOUSTIC CURRENT PROFILER

LinkQuest

An optional Function
Wave and Discharge
Measurement.
Bottom mounted, Side
Mounted

FlowQuest Models:
FQ75, 150, 300, 600, 1000,
2000, 1000h

<http://www.link-quest.com/>

UNDERWAY CTD (U-CTD)

UNDERWAY SV (Sound Velocity) Profiler



Continuous profiling without changing ship speed,
Easy to use

<http://www.oceanscience.com/index.html>

BARNACLE

Trawl-resistant bottom platforms
for acoustic Doppler profilers and
other oceanographic instruments



FLUOROMETER

**TURNER
DESIGNS**
Reliable Instruments for an Unreliable World

Using fluorescent concept .
Fast, Discrete and Monitoring
Analysis

Model Field, Laboratory,
Handheld, Submersible, and
ROV Fluorometer

<http://www.turnerdesigns.com/>



Hydrography & Hydrology

EchoSounder. Tide Gauge. Laser Scanner . Multiparameter Sonde .
Side Scan Sonar . Multibeam. Custom Made Stainless Steel Grab

MULTIPARAMETER SONDE

Comes standard with 6 sensors in less than a 2" diameter housing. Includes Optical Dissolved Oxygen, Temperature, pH, Specific Conductance, ORP and Depth.

Up to 14 integrated sensors



2 YRS WARRANTY!

eureka environmental engineering

www.eurekaenvironmental.com/

MULTIBEAM ECHO SOUNDER

R2 Sonic High Resolution Broadband

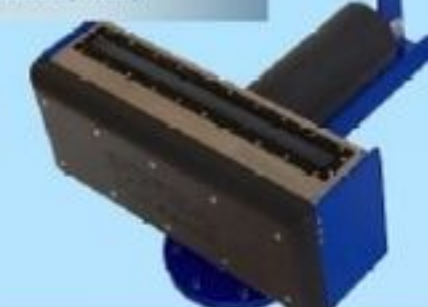
Portable, Selectable Frequencies from 200 to 400kHz, swath coverage from 10° to 160°

<http://www.r2sonic.com/>

3 YRS WARRANTY!

R2 SONIC

The next generation, literally



IMAGING SONAR SYSTEM

BlueView TECHNOLOGIES

BLUEVIEW TECHNOLOGIES

Acoustic imaging and measurement solutions for defense, energy, civil engineering, transportation, and port security applications worldwide.

<http://www.blueview.com/>



SIDE-SCAN SONAR

MARINE SONIC TECHNOLOGY



Dual frequency HDS PVC: 300/900 kHz, 600/1200 kHz, 900/1800 kHz.

<http://www.advanced-marine.com.sg/products.html>

LASER SCANNER

MDL

MDL Dynascan

Land Vehicle and Marine Vessel LIDAR

<http://www.mdl.co.uk/>



AIS TIDEMET

TideMet system transmitting live data over AIS direct to marine users data such as tide and weather



<http://www.ohmex.com/>

UNDERWATER CAMERA

BOWTECH PRODUCTS LIMITED

Underwater cameras, lights, pan & tilts, visual inspection system, electrical etc.

www.bowtech.co.uk/



PORTABLE ECHO-SOUNDER

OHMEX INSTRUMENTATION

Bluetooth technology integrated with Windows Pocket PC devices

<http://www.ohmex.com/>



PORTASAL SALINOMETER

Portable, Direct calculation of salinity, Calibration for CTD etc.

<http://www.guildline.ca/oceanography.php>



CUSTOM MADE GRAB



Stainless Steel Grab: Smith McIntyre, Van Veen, Ponar Grab, Ekman Grab

EONFUSION

EONfusion

4D GEOSPATIAL MODELLING SOFTWARE

For Oceanography, Tracking, Fisheries Management, Flood Mitigation etc

<http://www.eonfusion.com/>

AVID MINITRACKER & MICROCHIP



<http://www.avidple.com/>

Scanner and microchip for animals tagging system

DATA STORAGE TAGS & STARMON MINI



Various type of data storage tag

STAR: ODDI



Starmon mini

DST and Starmon with different function for temperature, conductivity and depth data logging for fish & environment study.

<http://www.star-oddi.com/>

Fisheries & Aquaculture

ELECTRO-FISHER



LR-24 BACKPACK ELECTRO-FISHER

24 volt battery powered electrofisher

[SMITH-ROOT.COM](http://www.smith-root.com)

Sample fish populations to determine abundance, density, and species composition.

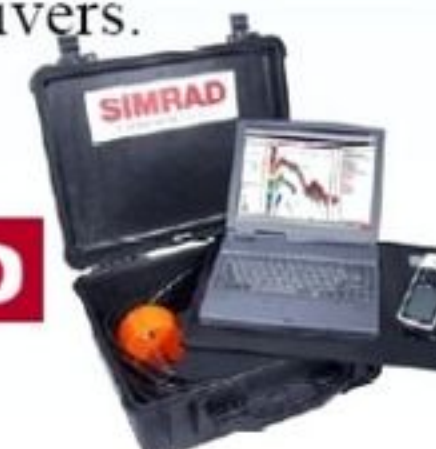
<http://www.electro-fisher.com/>

SCIENTIFIC ECHO SOUNDER

EK 60 : A split-beam Windows(TM) operated echo sounder with a built-in calibration utility.

EY 60 : The portable Simrad EY60 for Lakes and rivers.

SIMRAD



<http://www.simrad.com/>

CUSTOM MADE PLANKTON NET



Plankton Net, Kitahara Net, Bongo Net